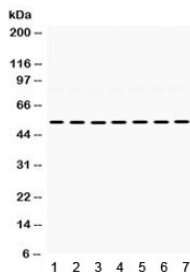


ADRA1A Antibody (R32076)

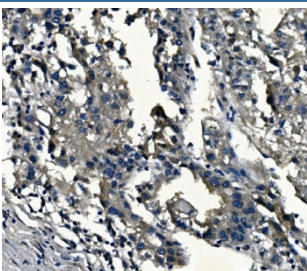
Catalog No.	Formulation	Size
R32076	0.5mg/ml if reconstituted with 0.2ml sterile DI water	100 ug

[Bulk quote request](#)

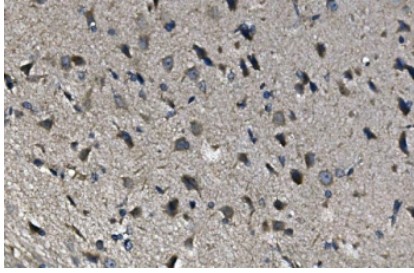
Availability	1-3 business days
Species Reactivity	Human, Mouse, Rat
Format	Antigen affinity purified
Host	Rabbit
Clonality	Polyclonal (rabbit origin)
Isotype	Rabbit IgG
Purity	Antigen affinity
Buffer	Lyophilized from 1X PBS with 2.5% BSA and 0.025% sodium azide
UniProt	P35348
Applications	Western Blot : 0.1-0.5ug/ml Immunohistochemistry (FFPE) : 1-2ug/ml Flow Cytometry : 1-3ug/10 ⁶ cells
Limitations	This ADRA1A antibody is available for research use only.



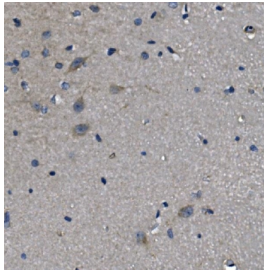
Western blot testing of 1) rat heart, 2) rat brain, 3) rat liver, 4) mouse liver, 5) mouse lung, 6) human 22RV1, and 7) human SMMC lysate with ADRA1A antibody. Expected/observed molecular weight ~52 kDa.



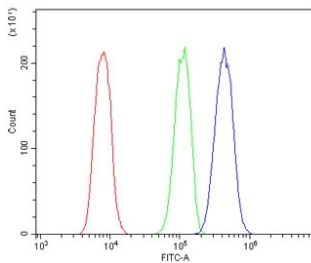
IHC staining of FFPE human liver cancer with ADRA1A antibody. HIER: boil tissue sections in pH6, 10mM citrate buffer, for 20 min and allow to cool before testing.



IHC staining of FFPE rat brain with ADRA1A antibody. HIER: boil tissue sections in pH6, 10mM citrate buffer, for 20 min and allow to cool before testing.



IHC staining of FFPE rat brain with ADRA1A antibody. HIER: boil tissue sections in pH6, 10mM citrate buffer, for 20 min and allow to cool before testing.



Flow cytometry testing of human A431 cells with ADRA1A antibody at 1ug/million cells (blocked with goat sera); Red=cells alone, Green=isotype control, Blue= ADRA1A antibody.

Description

ADRA1A, also known as alpha-1A adrenergic receptor, is an alpha-1 adrenergic receptor, and also denotes the human gene encoding it. This gene is mapped to 8p21.2. Alpha-1-adrenergic receptors are G protein-coupled transmembrane receptors that mediate actions in the sympathetic nervous system through the binding of the catecholamines, epinephrine and norepinephrine. It has been found that ADRA1A transcripts in heart, brain, liver, and prostate. ADRA1A is the predominant ADRA1 subtype in liver and heart, and it can mediate the contraction of prostate smooth muscle.

Application Notes

Optimal dilution of the ADRA1A antibody should be determined by the researcher.

Immunogen

Amino acids KAFQNVLRIQCLCRKQSSKHALGYTLHPPSQAVEGQHKD of human ADRA1A were used as the immunogen for the ADRA1A antibody.

Storage

After reconstitution, the ADRA1A antibody can be stored for up to one month at 4oC. For long-term, aliquot and store at -20oC. Avoid repeated freezing and thawing.

