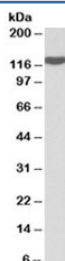


## ADAM19 Antibody (R34477)

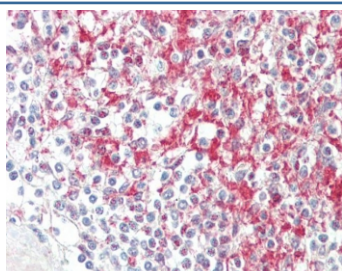
Catalog No.	Formulation	Size
R34477-100UG	0.5 mg/ml in 1X TBS, pH7.3, with 0.5% BSA (US sourced) and 0.02% sodium azide	100 ug

[Bulk quote request](#)

Availability	1-3 business days
Species Reactivity	Human
Predicted Reactivity	Dog, Pig, Cow
Format	Antigen affinity purified
Clonality	Polyclonal (goat origin)
Isotype	Goat Ig
Purity	Antigen affinity
Gene ID	8728
Applications	Western Blot : 0.1-0.3ug/ml IHC (FPPE) : 5ug/ml ELISA (peptide) LOD : 1:128000
Limitations	This ADAM19 antibody is available for research use only.



Western blot testing of spleen lysate with ADAM19 antibody at 0.1ug/ml. Predicted molecular weight: 105-125 kDa depending on level of glycosylation.



IHC testing of FFPE human spleen tissue with ADAM19 antibody at 5ug/ml. Required HIER: steamed antigen retrieval with pH6 citrate buffer; AP-staining.

## Description

Additional name(s) for this target protein: ADAM metallopeptidase domain 19, MADDAM

## Application Notes

Optimal dilution of the ADAM19 antibody should be determined by the researcher.

## Immunogen

Amino acids KIQCQSSEARPLESN were used as the immunogen for this ADAM19 antibody.

## Storage

Aliquot and store the ADAM19 antibody at -20oC.