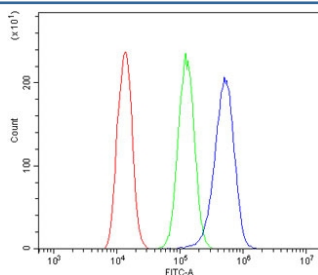


## ADAM15 Antibody (RQ6033)

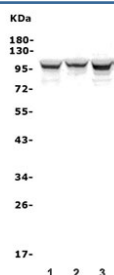
Catalog No.	Formulation	Size
RQ6033	0.5mg/ml if reconstituted with 0.2ml sterile DI water	100 ug

**Bulk quote request**

<b>Availability</b>	1-3 business days
<b>Species Reactivity</b>	Human
<b>Format</b>	Antigen affinity purified
<b>Host</b>	Rabbit
<b>Clonality</b>	Polyclonal (rabbit origin)
<b>Isotype</b>	Rabbit IgG
<b>Purity</b>	Affinity purified
<b>Buffer</b>	Lyophilized from 1X PBS with 2% Trehalose and 0.025% sodium azide
<b>UniProt</b>	Q13444
<b>Applications</b>	Western Blot : 0.5-1ug/ml Flow Cytometry : 1-3ug/million cells Direct ELISA : 0.1-0.5ug/ml
<b>Limitations</b>	This ADAM15 antibody is available for research use only.



Flow cytometry testing of human A431 cells with ADAM15 antibody at 1ug/million cells (blocked with goat sera); Red=cells alone, Green=isotype control, Blue= ADAM15 antibody.



Western blot testing of human 1) MDA-MB-453, 2) U-87 MG and 3) HEK293 lysate with ADAM15 antibody. Expected molecular weight: 93-110 kDa.

## Description

Disintegrin and metalloproteinase domain-containing protein 15 is an enzyme that in humans is encoded by the ADAM15 gene. This gene is mapped to 1q21.3. The protein encoded by this gene is a member of the ADAM (a disintegrin and metalloproteinase) protein family. ADAM family members are type I transmembrane glycoproteins known to be involved in cell adhesion and proteolytic ectodomain processing of cytokines and adhesion molecules. This protein contains multiple functional domains including a zinc-binding metalloprotease domain, a disintegrin-like domain, as well as a EGF-like domain. Through its disintegrin-like domain, this protein specifically interacts with the integrin beta chain, beta 3. It also interacts with Src family protein-tyrosine kinases in a phosphorylation-dependent manner, suggesting that this protein may function in cell-cell adhesion as well as in cellular signaling. Multiple alternatively spliced transcript variants encoding distinct isoforms have been observed.

## Application Notes

Optimal dilution of the ADAM15 antibody should be determined by the researcher.

## Immunogen

Recombinant human protein (amino acids R41-R456) was used as the immunogen for the ADAM15 antibody.

## Storage

After reconstitution, the ADAM15 antibody can be stored for up to one month at 4oC. For long-term, aliquot and store at -20oC. Avoid repeated freezing and thawing.