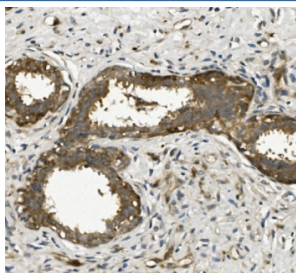


ACTR2 Antibody / Arp2 / Actin-related protein 2 (RQ5865)

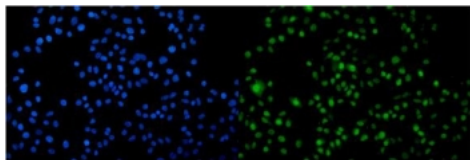
Catalog No.	Formulation	Size
RQ5865	0.5mg/ml if reconstituted with 0.2ml sterile DI water	100 ug

Bulk quote request

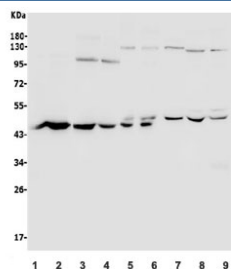
Availability	1-3 business days
Species Reactivity	Human, Mouse, Rat, Monkey
Format	Antigen affinity purified
Host	Rabbit
Clonality	Polyclonal (rabbit origin)
Isotype	Rabbit IgG
Purity	Affinity purified
Buffer	Lyophilized from 1X PBS with 2% Trehalose and 0.025% sodium azide
UniProt	P61160
Applications	Western Blot : 0.5-1ug/ml Immunohistochemistry : 1-2ug/ml Immunofluorescence : 2-4ug/ml Flow Cytometry : 1-3ug/million cells Direct ELISA : 0.1-0.5ug/ml
Limitations	This ACTR2 antibody is available for research use only.



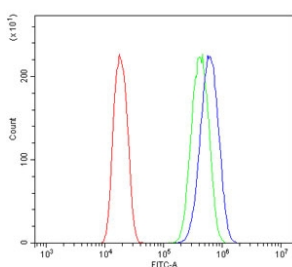
IHC staining of FFPE human breast cancer with ACTR2 antibody. HIER: boil tissue sections in pH8 EDTA for 20 min and allow to cool before testing.



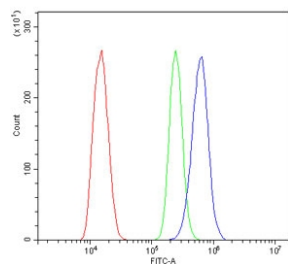
Immunofluorescent staining of FFPE human A549 cells with ACTR2 antibody (green) and DAPI nuclear stain (blue). HIER: steam section in pH6 citrate buffer for 20 min.



Western blot testing of 1) rat kidney, 2) rat spleen, 3) mouse HEPA1-6, 4) mouse SP2/0, 5) monkey COS-7 and human 6) U-87 MG, 7) Jurkat, 8) PC-3 and 9) U-2 OS lysate with ACTR2 antibody. Predicted molecular weight ~45 kDa.



Flow cytometry testing of human A431 cells with ACTR2 antibody at 1ug/million cells (blocked with goat sera); Red=cells alone, Green=isotype control, Blue= ACTR2 antibody.



Flow cytometry testing of mouse ANA-1 cells with ACTR2 antibody at 1ug/million cells (blocked with goat sera); Red=cells alone, Green=isotype control, Blue= ACTR2 antibody.

Description

The specific function of this gene has not yet been determined; however, the protein it encodes is known to be a major constituent of the ARP2/3 complex. This complex is located at the cell surface and is essential to cell shape and motility through lamellipodial actin assembly and protrusion. Two transcript variants encoding different isoforms have been found for this gene.

Application Notes

Optimal dilution of the ACTR2 antibody should be determined by the researcher.

Immunogen

Recombinant human protein (amino acids M1-R394) was used as the immunogen for the ACTR2 antibody.

Storage

After reconstitution, the ACTR2 antibody can be stored for up to one month at 4oC. For long-term, aliquot and store at -20oC. Avoid repeated freezing and thawing.

