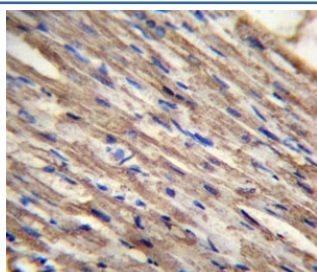


## ACSM6 Antibody (F42316)

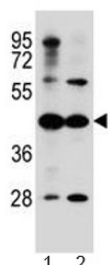
Catalog No.	Formulation	Size
F42316-0.4ML	In 1X PBS, pH 7.4, with 0.09% sodium azide	0.4 ml
F42316-0.08ML	In 1X PBS, pH 7.4, with 0.09% sodium azide	0.08 ml

[Bulk quote request](#)

<b>Availability</b>	1-3 business days
<b>Species Reactivity</b>	Human
<b>Format</b>	Antigen affinity purified
<b>Host</b>	Rabbit
<b>Clonality</b>	Polyclonal (rabbit origin)
<b>Isotype</b>	Rabbit Ig
<b>Purity</b>	Antigen affinity
<b>UniProt</b>	Q6P461
<b>Localization</b>	Cytoplasmic
<b>Applications</b>	IHC (Paraffin) : 1:10-1:50 Western Blot : 1:500-1:1000
<b>Limitations</b>	This ACSM6 antibody is available for research use only.



ACSM6 antibody analysis in formalin fixed and paraffin embedded human heart tissue.



Western blot testing of human 1) A549 and 2) HepG2 cell lysate with ACSM6 antibody at 1:1000. Predicted molecular weight ~53 kDa.

## Description

The exact functions of this protein remain unknown.

## Application Notes

Titration of the ACSM6 antibody may be required due to differences in protocols and secondary/substrate sensitivity.

## Immunogen

A portion of amino acids 433-460 from the human protein was used as the immunogen for this ACSM6 antibody.

## Storage

Aliquot the ACSM6 antibody and store frozen at -20oC or colder. Avoid repeated freeze-thaw cycles.