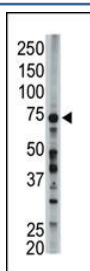


ACSL6 Antibody (F48095)

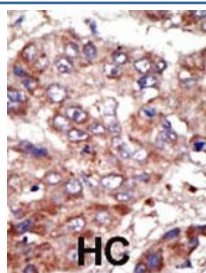
Catalog No.	Formulation	Size
F48095-0.4ML	In 1X PBS, pH 7.4, with 0.09% sodium azide	0.4 ml
F48095-0.08ML	In 1X PBS, pH 7.4, with 0.09% sodium azide	0.08 ml

[Bulk quote request](#)

Availability	1-3 business days
Species Reactivity	Human, Mouse
Format	Purified
Host	Rabbit
Clonality	Polyclonal (rabbit origin)
Isotype	Rabbit Ig
Purity	Purified
UniProt	Q9UKU0
Applications	Western Blot : 1:1000 IHC (Paraffin) : 1:50-1:100
Limitations	This ACSL6 antibody is available for research use only.



FACL6 antibody used in western blot to detect FACL6 in mouse liver tissue lysate



IHC analysis of FFPE human hepatocarcinoma tissue stained with the ACSL6 antibody

Description

FACL6 is involved in activation of long-chain fatty acids for both synthesis of cellular lipids, and degradation via beta-oxidation. It plays an important role in fatty acid metabolism in brain and the acyl-CoAs produced may be utilized exclusively for the synthesis of the brain lipid. FACL6 is expressed predominantly in erythrocyte precursors, in particular in reticulocytes, fetal blood cells derived from fetal liver, haemopoietic stem cells from cord blood, bone marrow, and brain. Expression is low at earlier stages of erythroid development but is very high in reticulocytes. This protein is involved in myelodysplastic syndrome (MDS) with basophilia, acute myelogenous leukemia (AML) with eosinophilia, and acute eosinophilic leukemia (AEL). It is characterized by a chromosomal translocation t(5;12)(q31;p13) that involves ETV6 and ACSL6.

Application Notes

Titration of the ACSL6 antibody may be required due to differences in protocols and secondary/substrate sensitivity.

Immunogen

A portion of amino acids 240-270 from the human protein was used as the immunogen for this ACSL6 antibody.

Storage

Aliquot the ACSL6 antibody and store frozen at -20oC or colder. Avoid repeated freeze-thaw cycles.