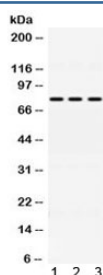


ACSL1 Antibody (R32493)

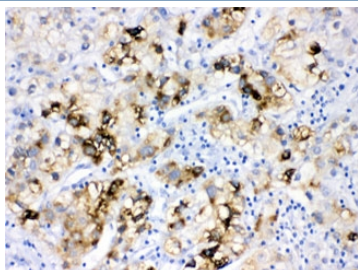
Catalog No.	Formulation	Size
R32493	0.5mg/ml if reconstituted with 0.2ml sterile DI water	100 ug

Bulk quote request

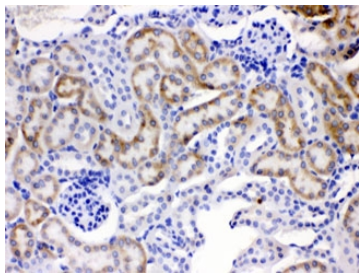
Availability	1-3 business days
Species Reactivity	Human, Mouse, Rat
Format	Antigen affinity purified
Host	Rabbit
Clonality	Polyclonal (rabbit origin)
Isotype	Rabbit IgG
Purity	Antigen affinity
Buffer	Lyophilized from 1X PBS with 2.5% BSA and 0.025% sodium azide
UniProt	P33121
Localization	Cytoplasmic
Applications	Western Blot : 0.5-1ug/ml IHC (FFPE) : 1-2ug/ml
Limitations	This ACSL1 antibody is available for research use only.



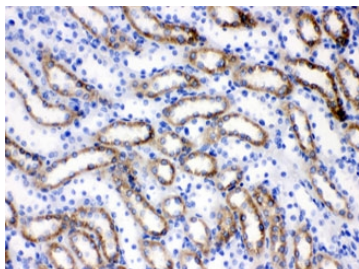
Western blot testing of 1) rat liver, 2) mouse HEPA and 3) A549 lysate with ACSL1 antibody at 0.5ug/ml. Predicted molecular weight ~78 kDa.



IHC testing of FFPE human liver cancer tissue with ACSL1 antibody at 1ug/ml. HIER: steam sections in pH6 citrate buffer for 20 min.



IHC testing of FFPE mouse kidney tissue with ACSL1 antibody at 1ug/ml. HIER: steam sections in pH6 citrate buffer for 20 min.



IHC testing of FFPE rat kidney tissue with ACSL1 antibody at 1ug/ml. HIER: steam sections in pH6 citrate buffer for 20 min.

Description

Long-chain-fatty-acid—CoA ligase 1 is an enzyme that in humans is encoded by the ACSL1 gene. The protein encoded by this gene is an isozyme of the long-chain fatty-acid-coenzyme A ligase family. Although differing in substrate specificity, subcellular localization, and tissue distribution, all isozymes of this family convert free long-chain fatty acids into fatty acyl-CoA esters, and thereby play a key role in lipid biosynthesis and fatty acid degradation. Several transcript variants encoding different isoforms have been found for this gene. This specific protein is most commonly found in mitochondria and peroxisomes.

Application Notes

Differences in protocols and secondary/substrate sensitivity may require the ACSL1 antibody to be titrated for optimal performance.

Immunogen

Amino acids D604-V698 from the human protein were used as the immunogen for the ACSL1 antibody.

Storage

After reconstitution, the ACSL1 antibody can be stored for up to one month at 4°C. For long-term, aliquot and store at -20°C. Avoid repeated freezing and thawing.