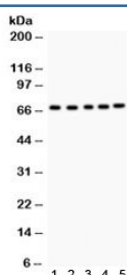


ACHE Antibody (R32016)

Catalog No.	Formulation	Size
R32016	0.5mg/ml if reconstituted with 0.2ml sterile DI water	100 ug

[Bulk quote request](#)

Availability	1-3 business days
Species Reactivity	Human, Mouse, Rat
Format	Antigen affinity purified
Host	Rabbit
Clonality	Polyclonal (rabbit origin)
Isotype	Rabbit IgG
Purity	Antigen affinity
Buffer	Lyophilized from 1X PBS with 2.5% BSA and 0.025% sodium azide
UniProt	P22303
Applications	Western Blot : 0.1-0.5ug/ml
Limitations	This ACHE antibody is available for research use only.



Western blot testing of 1) rat kidney, 2) mouse liver, 3) human HeLa, 4) PANC and 5) COLO320 lysate with ACHE antibody. Expected/observed molecular weight ~67 kDa.

Description

ACHE is also known as Acetylcholinesterase. And Acetylcholinesterase hydrolyzes the neurotransmitter, acetylcholine at neuromuscular junctions and brain cholinergic synapses, and thus terminates signal transmission. It is also found on the red blood cell membranes, where it constitutes the Yt blood group antigen. Acetylcholinesterase exists in multiple molecular forms which possess similar catalytic properties, but differ in their oligomeric assembly and mode of cell attachment to the cell surface. It is encoded by the single ACHE gene, and the structural diversity in the gene products arises from alternative mRNA splicing, and post-translational associations of catalytic and structural subunits. The major form of acetylcholinesterase found in brain, muscle and other tissues is the hydrophilic species, which forms disulfide-

linked oligomers with collagenous, or lipid-containing structural subunits. The other, alternatively spliced form, expressed primarily in the erythroid tissues, differs at the C-terminal end, and contains a cleavable hydrophobic peptide with a GPI-anchor site. It associates with the membranes through the phosphoinositide (PI) moieties added post-translationally.

Application Notes

Optimal dilution of the ACHE antibody should be determined by the researcher.

Immunogen

Amino acids SSYMVHWKNQFDHYSKQDRCS DL of human ACHE were used as the immunogen for the ACHE antibody.

Storage

After reconstitution, the ACHE antibody can be stored for up to one month at 4oC. For long-term, aliquot and store at -20oC. Avoid repeated freezing and thawing.