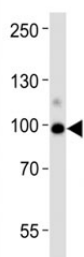


## ACE2 Antibody (F49433)

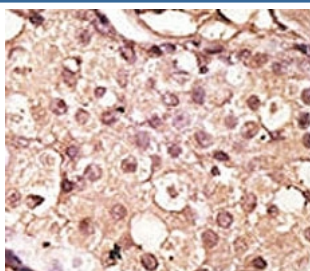
Catalog No.	Formulation	Size
F49433-0.4ML	In 1X PBS, pH 7.4, with 0.09% sodium azide	0.4 ml
F49433-0.08ML	In 1X PBS, pH 7.4, with 0.09% sodium azide	0.08 ml

[Bulk quote request](#)

<b>Availability</b>	1-3 business days
<b>Species Reactivity</b>	Human
<b>Format</b>	Purified
<b>Clonality</b>	Polyclonal (rabbit origin)
<b>Isotype</b>	Rabbit Ig
<b>Purity</b>	Purified
<b>UniProt</b>	Q9BYF1
<b>Applications</b>	Western Blot : 1:1000 IHC (Paraffin) : 1:50-1:100 ELISA : peptide immunogen
<b>Limitations</b>	This ACE2 antibody is available for research use only.



Western blot analysis of lysate from human kidney tissue lysate using ACE2 antibody diluted at 1:1000. Predicted molecular weight: 90-100 kDa.



IHC analysis of FFPE human breast carcinoma tissue stained with the ACE2 antibody

## Description

ACE2 is a carboxypeptidase which converts angiotensin I to angiotensin 1-9, a peptide of unknown function, and angiotensin II to angiotensin 1-7, a vasodilator. Also able to hydrolyze apelin-13 and dynorphin-13 with high efficiency. May be an important regulator of heart function. In case of human coronaviruses SARS and HCoV-NL63 infections, serve as functional receptor for the spike glycoprotein of both coronaviruses. [UniProt]

## Application Notes

Titration of the ACE2 antibody may be required due to differences in protocols and secondary/substrate sensitivity.

## Immunogen

A portion of amino acids 140-172 from the human protein was used as the immunogen for this ACE2 antibody.

## Storage

Aliquot the ACE2 antibody and store frozen at -20oC or colder. Avoid repeated freeze-thaw cycles.