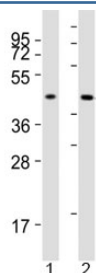


ACAT1 Antibody (F50511)

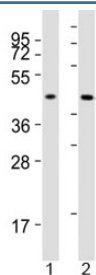
Catalog No.	Formulation	Size
F50511-0.4ML	In 1X PBS, pH 7.4, with 0.09% sodium azide	0.4 ml
F50511-0.08ML	In 1X PBS, pH 7.4, with 0.09% sodium azide	0.08 ml

[Bulk quote request](#)

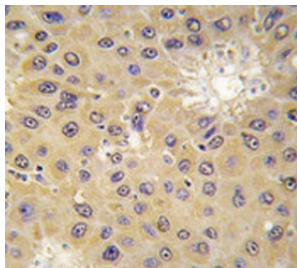
Availability	1-3 business days
Species Reactivity	Human, Mouse
Predicted Reactivity	Primate
Format	Purified
Host	Rabbit
Clonality	Polyclonal (rabbit origin)
Isotype	Rabbit Ig
Purity	Purified
UniProt	P24752
Localization	Cytoplasmic
Applications	Western Blot : 1:1000 IHC (Paraffin) : 1:10-1:50
Limitations	This ACAT1 antibody is available for research use only.



Western blot testing of ACAT1 antibody at 1:2000 dilution. Lane 1: human SW620 lysate; 2: mouse liver lysate; Predicted molecular weight: ~45kDa.



Western blot testing of ACAT1 antibody at 1:1000 dilution. Lane 1: human SK-BR-3 lysate; 2: human HepG2 lysate; Predicted molecular weight: ~45 kDa.



IHC analysis of FFPE human hepatocarcinoma tissue stained with ACAT1 antibody

Description

Acetyl-CoA acetyltransferase 1 is a mitochondrially localized enzyme that catalyzes the reversible formation of acetoacetyl-CoA from two molecules of acetyl-CoA. Defects in the gene encoding ACAT1 are associated with the alpha-methylacetoaceticaciduria disorder, an inborn error of isoleucine catabolism characterized by urinary excretion of 2-methyl-3-hydroxybutyric acid, 2-methylacetoacetic acid, tiglylglycine, and butanone.

Application Notes

Titration of the ACAT1 antibody may be required due to differences in protocols and secondary/substrate sensitivity.

Immunogen

A portion of amino acids 296-329 from the human protein was used as the immunogen for this ACAT1 antibody.

Storage

Aliquot the ACAT1 antibody and store frozen at -20°C or colder. Avoid repeated freeze-thaw cycles.