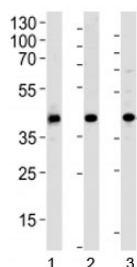


## ACADL Antibody (F42746)

Catalog No.	Formulation	Size
F42746-0.4ML	In 1X PBS, pH 7.4, with 0.09% sodium azide	0.4 ml
F42746-0.08ML	In 1X PBS, pH 7.4, with 0.09% sodium azide	0.08 ml

[Bulk quote request](#)

<b>Availability</b>	1-3 business days
<b>Species Reactivity</b>	Human, Mouse, Rat
<b>Format</b>	Antigen affinity purified
<b>Host</b>	Rabbit
<b>Clonality</b>	Polyclonal (rabbit origin)
<b>Isotype</b>	Rabbit Ig
<b>Purity</b>	Antigen affinity
<b>UniProt</b>	P28330
<b>Localization</b>	Cytoplasmic
<b>Applications</b>	Western Blot : 1:500-1000
<b>Limitations</b>	This ACADL antibody is available for research use only.



Western blot analysis of 1) human HepG2, 2) mouse kidney and 3) rat spleen tissue lysate using ACADL antibody at 1:1000. Predicted molecular weight ~48 kDa.

## Description

Long-chain specific acyl-CoA dehydrogenase, mitochondrial belongs to the acyl-CoA dehydrogenase family, which is a family of mitochondrial flavoenzymes involved in fatty acid and branched chain amino-acid metabolism. This protein is one of the four enzymes that catalyze the initial step of mitochondrial beta-oxidation of straight-chain fatty acid. Defects in this gene are the cause of long-chain acyl-CoA dehydrogenase (LCAD) deficiency, leading to nonketotic hypoglycemia.

## Application Notes

Titration of the ACADL antibody may be required due to differences in protocols and secondary/substrate sensitivity.

## Immunogen

A portion of amino acids 14-43 from the human protein was used as the immunogen for this ACADL antibody.

## Storage

Aliquot the ACADL antibody and store frozen at -20oC or colder. Avoid repeated freeze-thaw cycles.