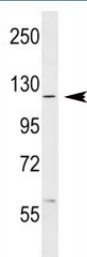


ABL1 Antibody (F50694)

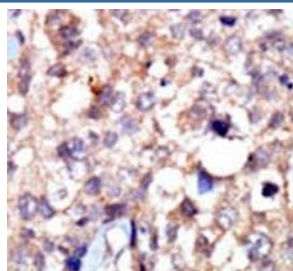
Catalog No.	Formulation	Size
F50694-0.4ML	In 1X PBS, pH 7.4, with 0.09% sodium azide	0.4 ml
F50694-0.08ML	In 1X PBS, pH 7.4, with 0.09% sodium azide	0.08 ml

Bulk quote request

Availability	1-3 business days
Species Reactivity	Human
Format	Antigen affinity purified
Clonality	Polyclonal (rabbit origin)
Isotype	Rabbit Ig
Purity	Antigen affinity
UniProt	P00519
Applications	IHC (Paraffin) : 1:50-1:100 Western Blot : 1:1000
Limitations	This ABL1 antibody is available for research use only.



ABL1 antibody western blot analysis in MCF-7 lysate. Predicted molecular weight ~120-150 kDa.



IHC analysis of FFPE human breast carcinoma tissue stained with the ABL1 antibody

Description

The ABL1 protooncogene encodes a cytoplasmic and nuclear protein tyrosine kinase that has been implicated in processes of cell differentiation, cell division, cell adhesion, and stress response. Activity of c-Abl protein is negatively regulated by its SH3 domain, and deletion of the SH3 domain turns ABL1 into an oncogene. The t(9;22) translocation results in the head-to-tail fusion of the BCR and ABL1 genes present in many cases of chronic myelogenous leukemia. The DNA-binding activity of the ubiquitously expressed ABL1 tyrosine kinase is regulated by CDC2-mediated phosphorylation, suggesting a cell cycle function for ABL1.

Application Notes

Titration of the ABL1 antibody may be required due to differences in protocols and secondary/substrate sensitivity.

Immunogen

A portion of amino acids 851-881 from the human protein was used as the immunogen for this ABL1 antibody.

Storage

Aliquot the ABL1 antibody and store frozen at -20oC or colder. Avoid repeated freeze-thaw cycles.