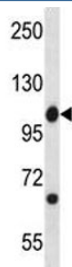


## Abl1 Antibody (F43352)

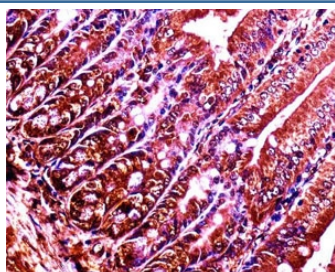
Catalog No.	Formulation	Size
F43352-0.4ML	In 1X PBS, pH 7.4, with 0.09% sodium azide	0.4 ml
F43352-0.08ML	In 1X PBS, pH 7.4, with 0.09% sodium azide	0.08 ml

[Bulk quote request](#)

<b>Availability</b>	1-3 business days
<b>Species Reactivity</b>	Mouse
<b>Format</b>	Antigen affinity purified
<b>Host</b>	Rabbit
<b>Clonality</b>	Polyclonal (rabbit origin)
<b>Isotype</b>	Rabbit Ig
<b>Purity</b>	Antigen affinity
<b>UniProt</b>	P00520
<b>Localization</b>	Nuclear, cytoplasmic
<b>Applications</b>	Western Blot : 1:1000 IHC (Paraffin) : 1:10-1:50
<b>Limitations</b>	This Abl1 antibody is available for research use only.



Abl1 antibody western blot analysis in mouse spleen tissue lysate. Predicted molecular weight ~122 kDa.



Abl1 antibody immunohistochemistry analysis in formalin fixed and paraffin embedded mouse duodenum tissue.

## Description

Abl1 is a protein kinase that regulates key processes linked to cell growth and survival. Regulates cytoskeleton remodeling during cell differentiation, cell division and cell adhesion. Localizes to dynamic actin structures, and phosphorylates CRK and CRKL, DOK1, and other proteins controlling cytoskeleton dynamics. Regulates DNA repair potentially by activating the proapoptotic pathway when the DNA damage is too severe to be repaired. Phosphorylates PSMA7 that leads to an inhibition of proteasomal activity and cell cycle transition blocks.

## Application Notes

Titration of the Abl1 antibody may be required due to differences in protocols and secondary/substrate sensitivity.

## Immunogen

A portion of amino acids 613-641 from the mouse protein was used as the immunogen for this Abl1 antibody.

## Storage

Aliquot the Abl1 antibody and store frozen at -20oC or colder. Avoid repeated freeze-thaw cycles.