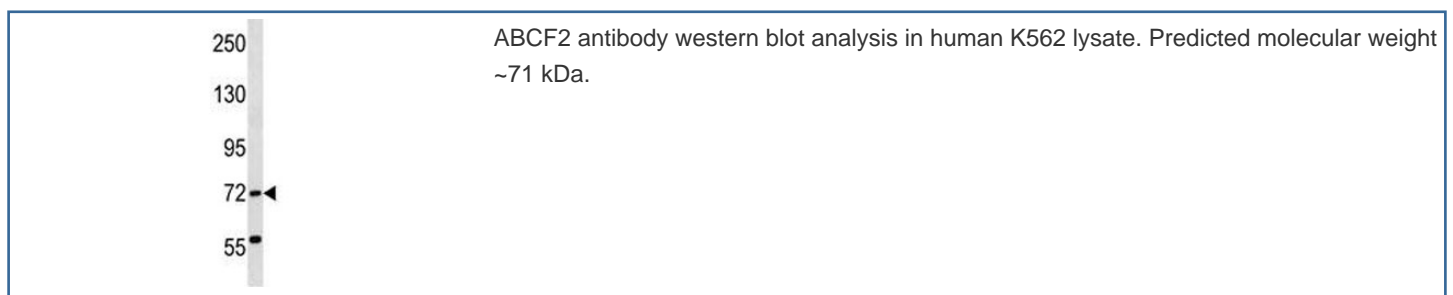


ABCF2 Antibody (F45139)

Catalog No.	Formulation	Size
F45139-0.4ML	In 1X PBS, pH 7.4, with 0.09% sodium azide	0.4 ml
F45139-0.08ML	In 1X PBS, pH 7.4, with 0.09% sodium azide	0.08 ml

[Bulk quote request](#)

Availability	1-3 business days
Species Reactivity	Human
Predicted Reactivity	Mouse, Bovine
Format	Antigen affinity purified
Host	Rabbit
Clonality	Polyclonal (rabbit origin)
Isotype	Rabbit Ig
Purity	Antigen affinity
UniProt	Q9UG63
Applications	Western Blot : 1:1000
Limitations	This ABCF2 antibody is available for research use only.



Description

The protein encoded by this gene is a member of the superfamily of ATP-binding cassette (ABC) transporters. ABC proteins transport various molecules across extra- and intracellular membranes. ABC genes are divided into seven distinct subfamilies (ABC1, MDR/TAP, MRP, ALD, OABP, GCN20, and White). This protein is a member of the GCN20 subfamily. Alternative splicing of this gene results in multiple transcript variants. [provided by RefSeq].

Application Notes

Titration of the ABCF2 antibody may be required due to differences in protocols and secondary/substrate sensitivity.

Immunogen

A portion of amino acids 3-32 from the human protein was used as the immunogen for this ABCF2 antibody.

Storage

Aliquot the ABCF2 antibody and store frozen at -20oC or colder. Avoid repeated freeze-thaw cycles.