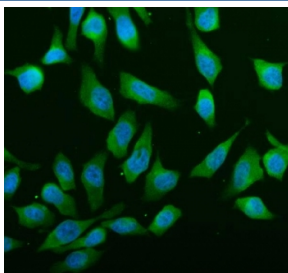


## ABCE1 Antibody (R32488)

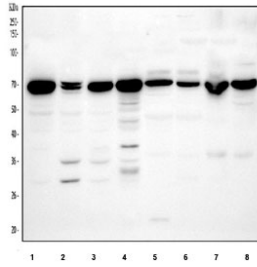
Catalog No.	Formulation	Size
R32488	0.5mg/ml if reconstituted with 0.2ml sterile DI water	100 ug

### Bulk quote request

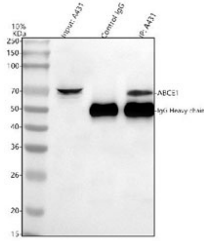
<b>Availability</b>	1-3 business days
<b>Species Reactivity</b>	Human, Mouse, Rat
<b>Format</b>	Antigen affinity purified
<b>Host</b>	Rabbit
<b>Clonality</b>	Polyclonal (rabbit origin)
<b>Isotype</b>	Rabbit IgG
<b>Purity</b>	Antigen affinity
<b>Buffer</b>	Lyophilized from 1X PBS with 2% Trehalose
<b>UniProt</b>	P61221
<b>Localization</b>	Cytoplasmic
<b>Applications</b>	Western Blot : 0.5-1ug/ml Immunofluorescence : 5ug/ml Immunoprecipitation : 2ug antibody/500ug lysate Flow Cytometry : 1-3ug/million cells
<b>Limitations</b>	This ABCE1 antibody is available for research use only.



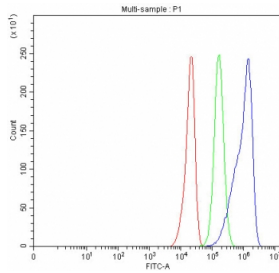
Immunofluorescent staining of FFPE human HeLa cells with ABCE1 antibody (green) and DAPI nuclear stain (blue). HIER: steam section in pH6 citrate buffer for 20 min.



Western blot testing of 1) human HepG2, 2) human A431, 3) human U-2 OS, 4) human Jurkat, 5) rat brain, 6) mouse brain, 7) mouse 4T1 and 8) mouse NIH 3T3 cell lysate with ABCE1 antibody at 0.5ug/ml. Predicted molecular weight ~67 kDa.



Immunoprecipitation of ABCE1 protein from 500ug of human A431 whole cell lysate with 2ug of ABCE1 antibody.



Flow cytometry testing of fixed and permeabilized human U-251 cells with ABCE1 antibody at 1ug/million cells (blocked with goat sera); Red=cells alone, Green=isotype control, Blue= ABCE1 antibody.

## Description

ATP binding cassette E1 (ABCE1, also called RNase L inhibitor) is an ATPase found in humans involved in viral assembly. It is a member of the ATP-binding cassette (ABC) transporters superfamily and OABP subfamily. ABCE1 inhibits the action of ribonuclease L. Ribonuclease L normally binds to 2-5A (5'-phosphorylated 2',5'-linked oligoadenylates) and inhibits the interferon-regulated 2-5A/RNase L pathway, which is used by viruses. ABCE1 heterodimerize with ribonuclease L and prevents its interaction with 2-5A, antagonizing the anti-viral properties of ribonuclease L, and allow the virus to synthesize viral proteins. It has also been implicated to have an effect in tumor cell proliferation and antiapoptosis.

## Application Notes

Differences in protocols and secondary/substrate sensitivity may require the ABCE1 antibody to be titrated for optimal performance.

## Immunogen

Amino acids K419-D599 from the human protein were used as the immunogen for the ABCE1 antibody.

## Storage

After reconstitution, the ABCE1 antibody can be stored for up to one month at 4°C. For long-term, aliquot and store at -20°C. Avoid repeated freezing and thawing.

